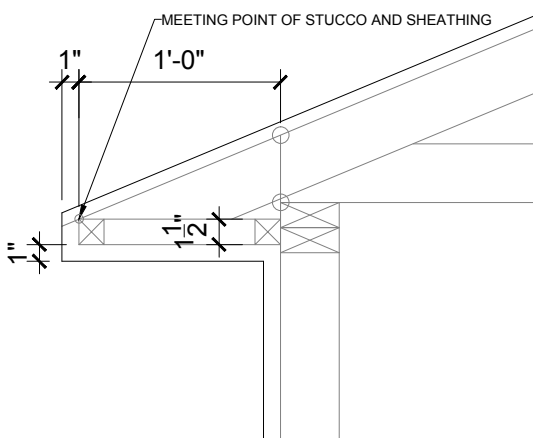
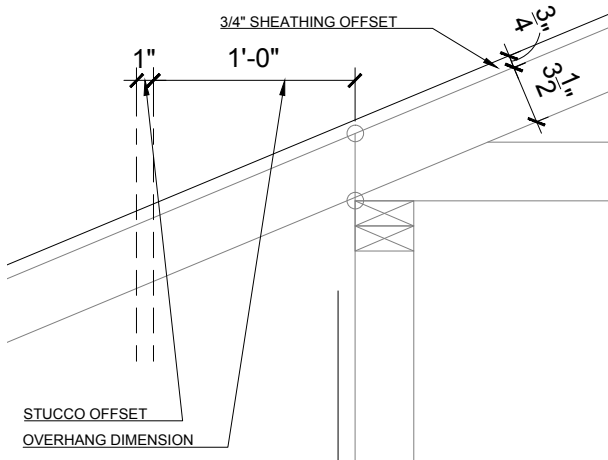
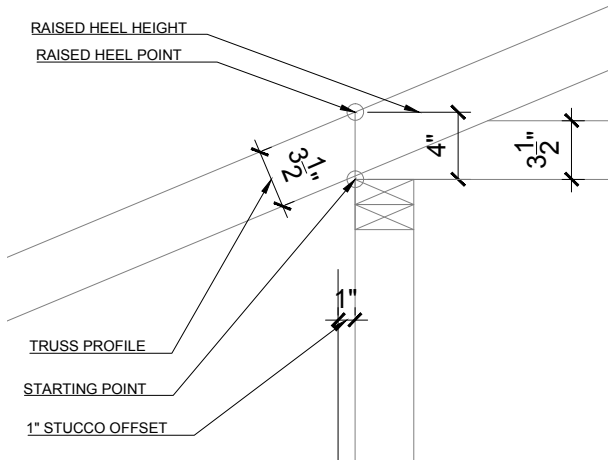
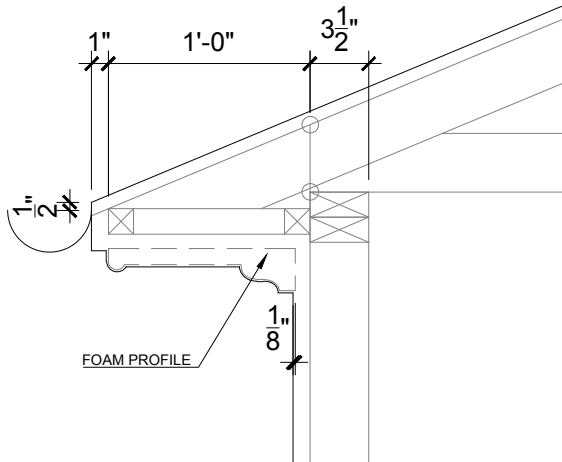


ROOF FACTORY TUTORIAL - FOAM EAVE

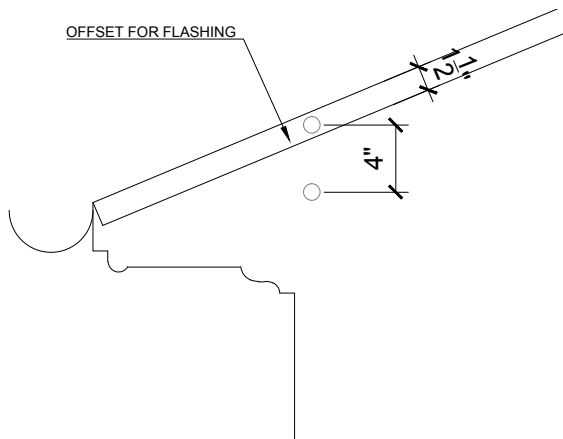


1. Always start by drawing the section of the roof block you wish to create.
2. Locate the starting point on the roof factory template. This point will also be the **Insertion Point** at 0,0 (once the block is completed) and is located along the face of framing.
3. Beginning at the **Starting Point**, draw a line with the desired slope and offset the line by the thickness of the **Truss Profile**.
4. Identify the location of the **Raised Heel Point** as the intersection of the framing and the upper line of the truss. The raised heel height should always be a half-inch or whole number and the Truss should be raised or lowered accordingly to accomplish this.
5. Draw a line 1" from the framing to represent the line of the exterior stucco.
6. Offset a line 3/4" for Sheathing on top of the Truss.
7. Draw a reference line for the **Overhang Dimension** beginning from the framing and a line for the 1" **Stucco Offset**.
8. Find the **Meeting Point** of the Overhang and Truss to identify where the Eave framing should begin. Depending on the design, this size may vary.
9. Offset a line 1" underneath for stucco.

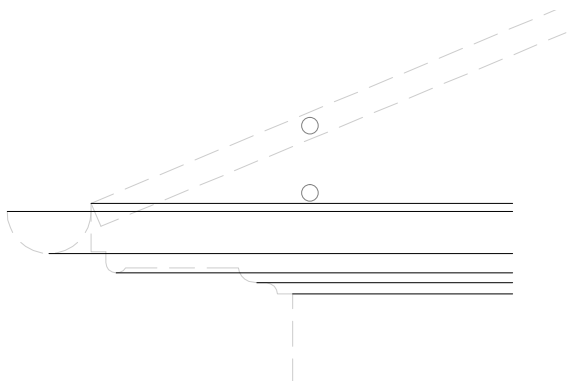
ROOF FACTORY TUTORIAL - FOAM EAVE



10. Place the foam profile on the underside of the eave and recess it into the stucco by 1/8".
11. Place a 5" gutter 1/2" below the top of sheathing.
12. Your section block is complete. Now you can begin to develop the blocks for the other parts of the roof.

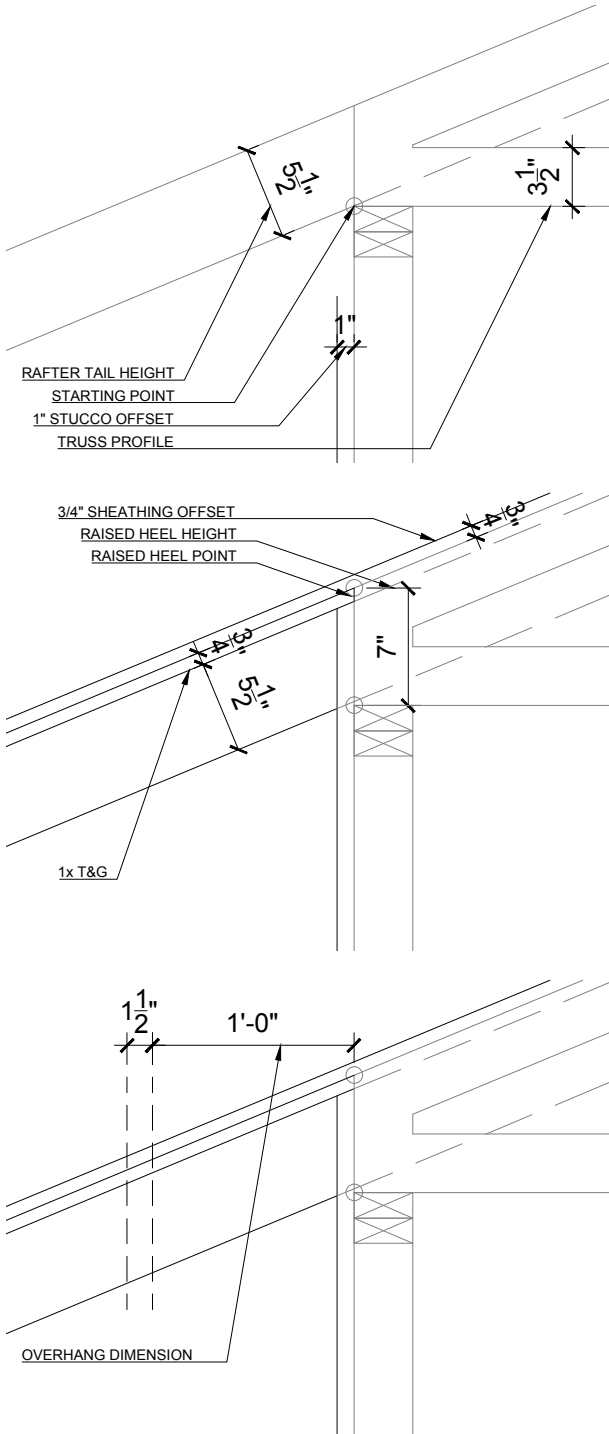


1. Use the section block to develop the eave by deleting all the lines related to the structure. The profile should be all that remains.
2. Offset a line from the top of the sheathing by 1-1/2" to determine the edge of the flashing.
3. The eave block is now complete.



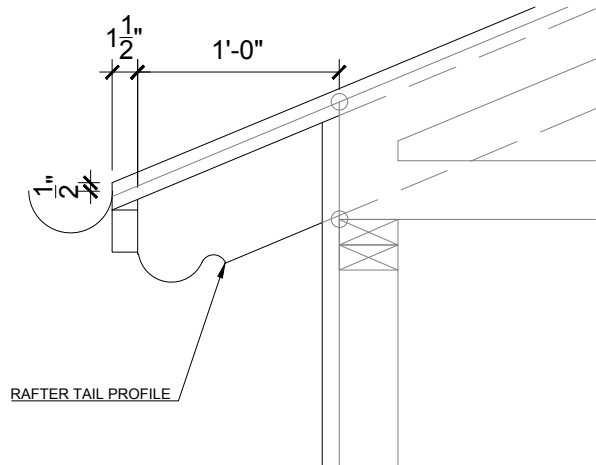
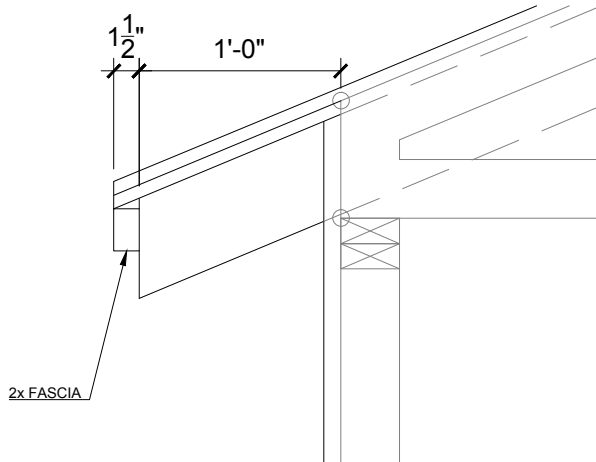
1. Use the section block or the eave block to develop the other related blocks.
2. Draw lines for the components of the eave that you will see. See example on the left.

ROOF FACTORY TUTORIAL - RAFTER TAILS

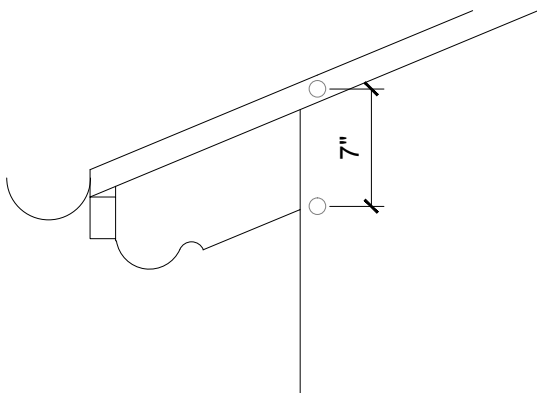


1. Always start by drawing the section of the roof block you wish to create.
2. Locate the starting point on the roof factory template. This point will also be the **Insertion Point** at 0,0 (once the block is completed) and is located along the face of framing.
3. Beginning at the **Starting Point**, draw a line with the desired slope and offset the line by the thickness of the **Rafter Tail Height**. Confirm the size with your TL and/or Designer.
4. From the top of the rafter tail, offset a line for the **1x T&G**. Next, offset a line above the top of the T&G by 3/4" for the **Roof Sheathing**. Refer to the images for a graphic representation.
5. Identify the location of the **Raised Heel Point** as the intersection of the framing and the sheathing. The raised heel height should always be a half-inch or whole number and the Rafter Tail should be raised or lowered accordingly to accomplish this.
6. Draw the profile of the truss by using a 3-1/2" offset.
7. Draw a reference line for the **Overhang Dimension** beginning from the framing and another line for the **2x Fascia**.

ROOF FACTORY TUTORIAL - RAFTER TAILS



8. Trim the lines to create the **Rafter Tail** and **2x Fascia**.
The 2x fascia will attach to the edge of the rafter tail and at the base of the T&G as a connection point for the gutter.
9. Create the **Rafter Tail Profile** per the design intent.
10. Place a 5" gutter 1/2" below the top of sheathing.
11. Your section block is complete. Now, you can begin to develop the blocks for the other parts of the roof.



1. Use the section block to develop the rake by deleting all the lines related to the structure.
2. Offset a line from the top of the sheathing by 1-1/2" to identify the edge of the flashing.
3. The block is now complete.