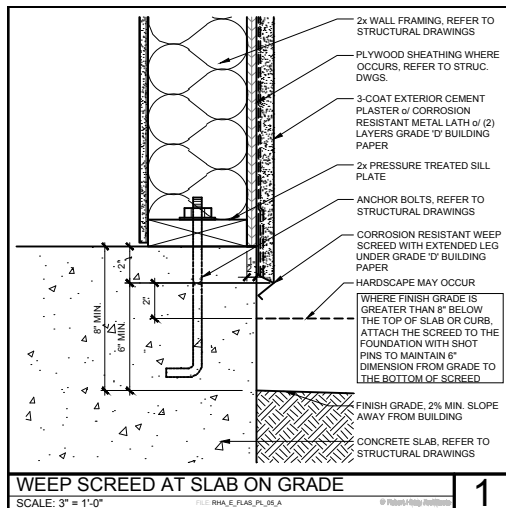
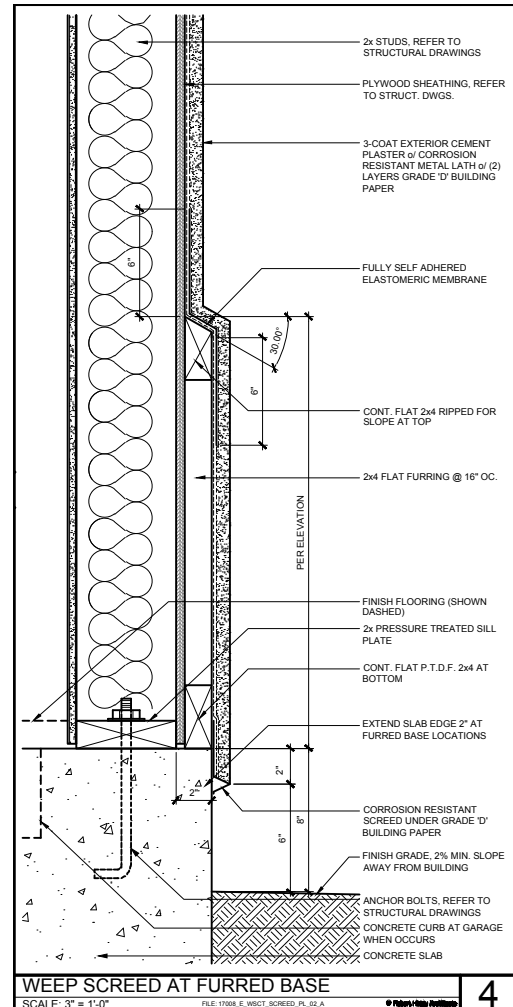


## SLAB PLAN INPUT

1. What is your slab condition on your project?
2. What does the detail look like?
3. Doors: Do you have sliders, multi-slide (stackable), or bi-fold doors that may want a depressed threshold? Are the doors flush or recessed?

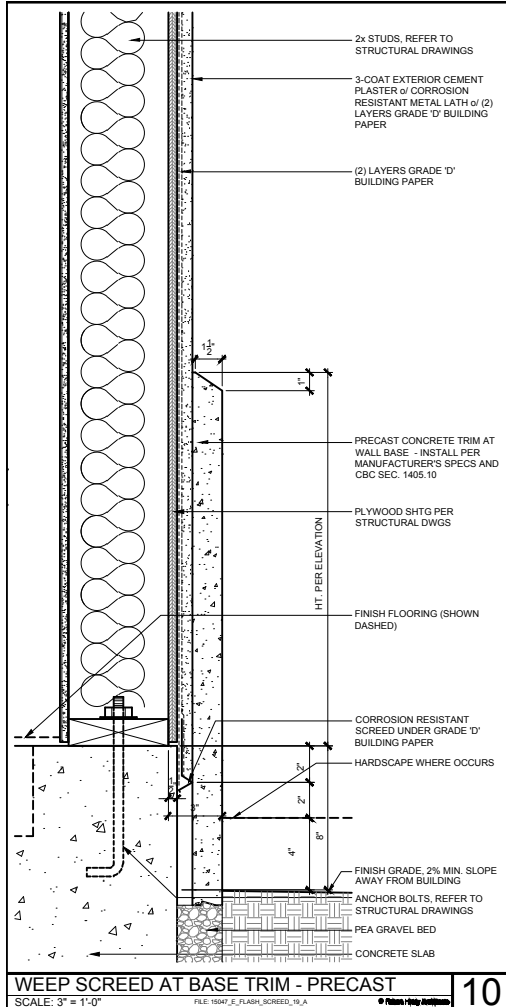


TYPICAL CONDITION - 1/2" FROM FRAMING TO FLUSH WITH PLYWOOD/SHEAR

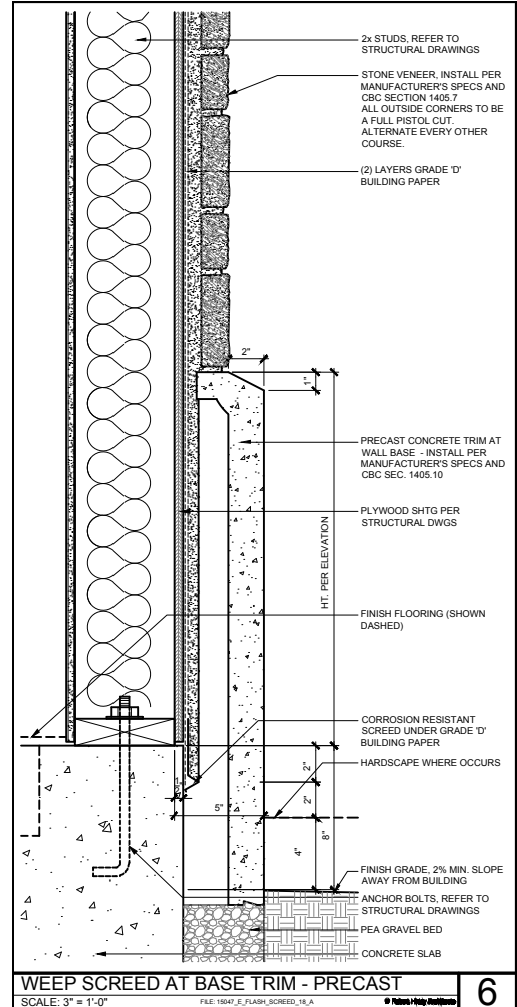


BASE TRIM - FURRED OUT CONDITION

## SLAB PLAN INPUT

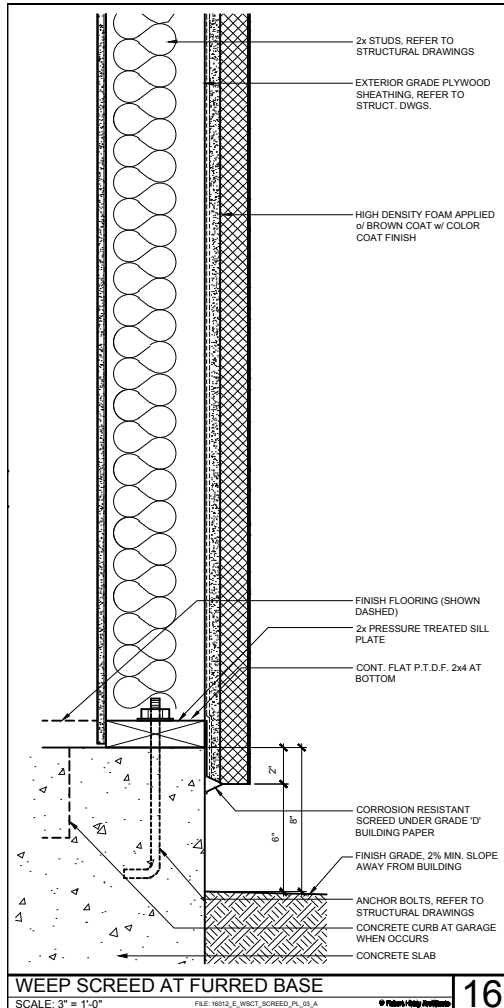


PRECAST/STONE BASE TRIM CONDITION

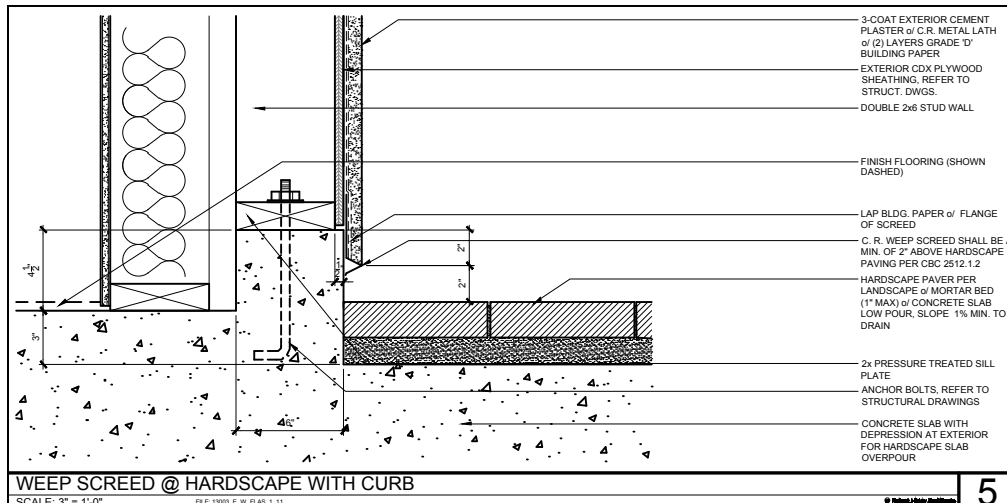


PRECAST/STONE BASE TRIM CONDITION

## SLAB PLAN INPUT



FOAM BASE TRIM - NOT PREFERRED



COMMERCIAL - ACCESSIBLE CONDITION  
WITH A CURB

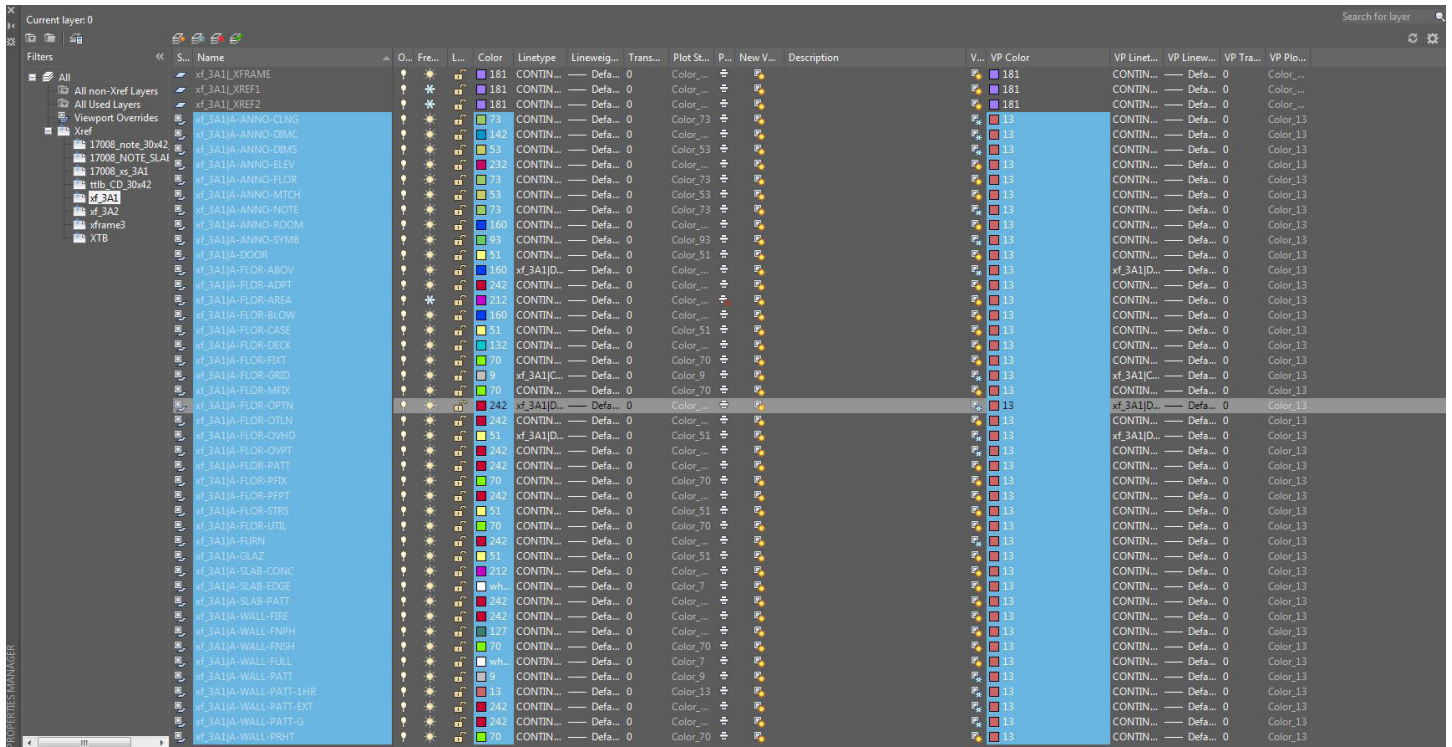
# R H A

ROBERT HIDEY ARCHITECTS

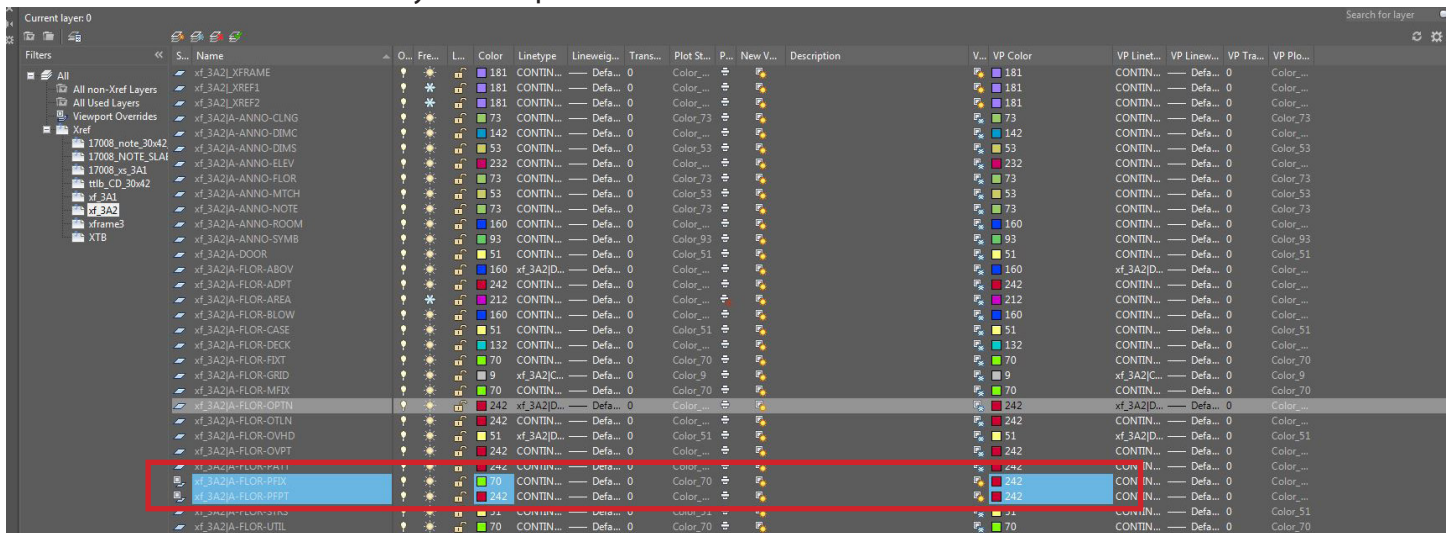
## SLAB PLAN INPUT

To begin, start by creating an 'xs' file by xrefing (attach) the 1st floor and 2nd floor of your plan:

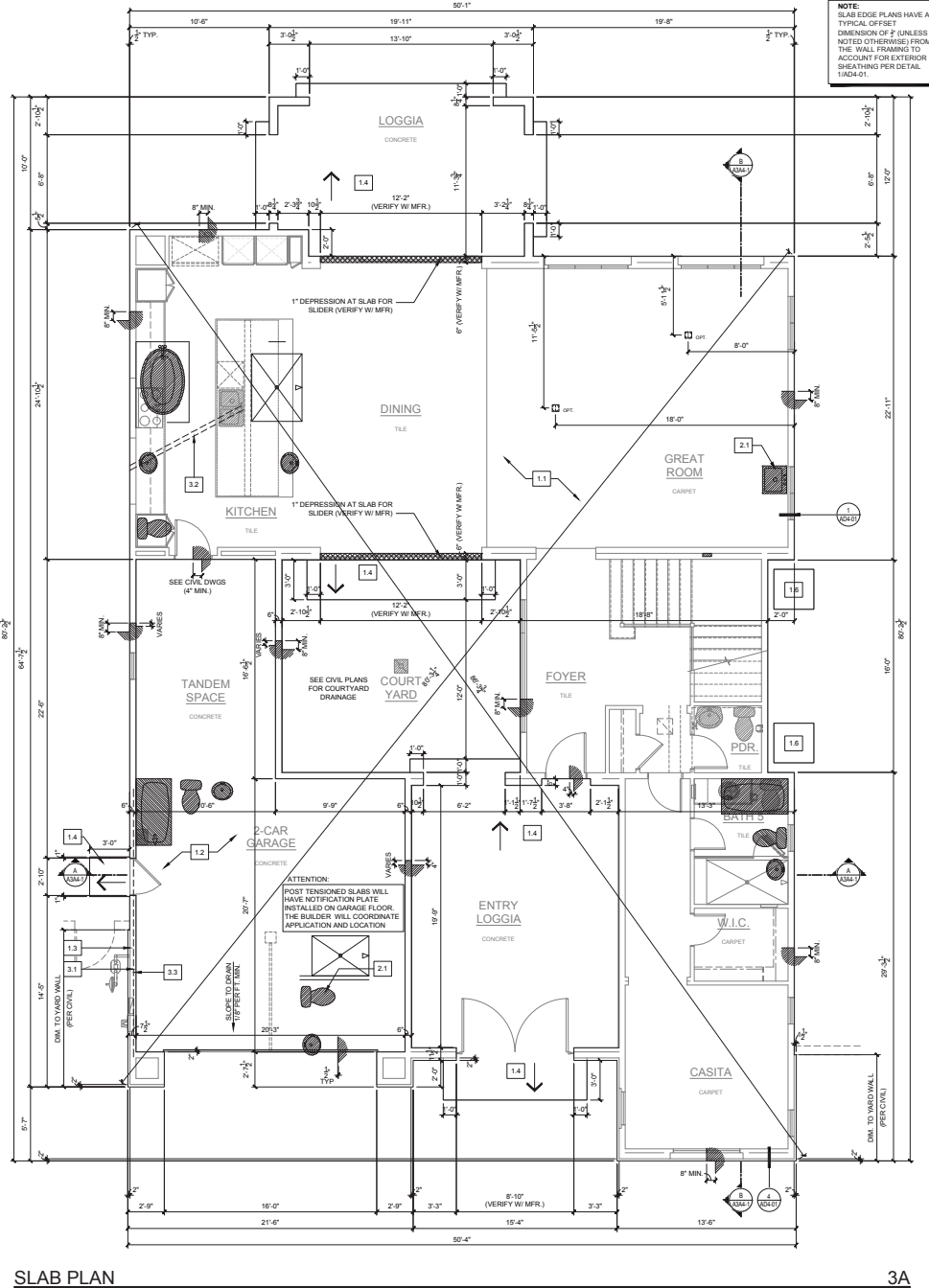
- 1st Floor Xref: Screen everything to 13 - Salmon
  - Freeze Layers: A-ANNO-CLNG, A-ANNO-DIMC (MOST LIKELY), A-ANNO-DIMS, A-ANNO-NOTE, A-FLOOR-ABOVE, A-FLOOR-AREA, A-FLOOR-GRID, A-FLOOR-OPTN, A-FLOOR-OVHD, A-FLOOR-OVPT, A-FURN, A-WALL-PATT (ALL TYPES)



- 2nd Floor Xref: Screen A-FLOOR-PFIX & A-FLOOR-PFPT to 242 - Red
  - Freeze all 2nd floor layers except A-FLOOR-PFIX & A-FLOOR-PFPT



## SLAB PLAN INPUT



### SLAB EDGE PLAN NOTES

- SYMBOL LEGEND:**
- XX KEY NOTE
  - STEP IN SLAB
- SLAB EDGE**
- 1.1 CONCRETE HOUSE SLAB - S.S.D.
  - 1.2 CONCRETE GARAGE SLAB - S.S.D.
  - 1.3 CONCRETE CURB AT GARAGE
  - 1.4 CONCRETE STOP - 30" DEEP (U.N.O.) BY THE WIDTH OF THE DOOR AS A MIN. (U.N.O.). SLOPE 1/4" = 12" AWAY FROM BUILDING. PROVIDE STEPS TO GRADE AS REQUIRED. REFER TO CIVIL AND LANDSCAPE DRAWINGS FOR STOOP AND ENTRY WALK LAYOUT.
  - 1.5 CONCRETE STEPS MAY OCCUR. REFER TO CIVIL DRAWINGS FOR EXACT LOCATION AND NUMBER.
  - 1.6 CONCRETE PAD FOR AC COMPRESSOR UNIT

### GENERAL NOTES

- 2.1 HATCHING INDICATES PLUMBING FIXTURES AT SECOND FLOOR.
- 2.2 EDGE OF APRON.
- 2.3 1" DIAMETER CONCRETE FILLED PIPE BOLLARD.
- 3.1 CONCRETE ENCASED GROUNDING ELECTRODE. PROVIDE (1) 20 FOOT LONG 3/4" BAR IN FOOTING AND EXTEND OUT OF CURB 12 INCHES FOR GROUNDING OF ELECTRICAL SYSTEM (VERIFY LOCATION).
- 3.2 PROVIDE VENT, GAS, WATER AND/OR ELECTRICAL CONDUIT UNDER FLOOR AT ISLAND AS NEEDED. SEE DETAIL AND/OR FOR SLAB PENETRATION REFERENCE AT PLUMBING CONDITION.
- 3.3 CONTROL UNDER GROUND ELECTRICAL CONDUIT TO FRONT OF UNIT FOR IRRIGATION.
- 4.1 PROVIDE SLEEVE FOR HANDRAILS AT STEPS IN GARAGE WHERE OCCURS.
5. ALL MECHANICAL EQUIPMENT, GRILLS AND CONTROLS ARE FOR REFERENCE ONLY. REFER TO MECHANICAL DRAWINGS FOR DESIGN, DETAILS AND DIMENSIONS.
6. ALL ELECTRICAL FIXTURES, OUTLETS AND EQUIPMENT ARE FOR REFERENCE ONLY. REFER TO ELECTRICAL DRAWINGS FOR DESIGN, DETAILS AND DIMENSIONS BY OTHERS.
7. ALL STRUCTURAL MEMBERS AND ELEMENTS ARE SHOWN FOR REFERENCE ONLY. REFER TO STRUCTURAL ENGINEERS DRAWINGS FOR DESIGN, DETAILS AND DIMENSIONS.
8. DRAINS AND SLAB PENETRATIONS SHOWN ON THIS SHEET ARE FOR ARCHITECTURAL PURPOSES AND DO NOT REFLECT ALL REQUIRED CONDITIONS. CONTRACTOR TO REFER TO PLUMBING, MECHANICAL AND STRUCTURAL PLANS. ALL PENETRATIONS ARE TO BE IN COMPLIANCE WITH THE STRUCTURAL PLANS.
9. ALL EQUIPMENT, APPLIANCES, AND FIXTURES TO BE INSTALLED PER MFR'S RECOMMENDATIONS.
10. ALL ELEVATIONS SHOWN ARE FOR REFERENCE AND TO BE VERIFIED BY CONTRACTOR WITH CIVIL DRAWINGS AND ASSEMBLY DETAILS.
11. REFER TO CIVIL ENGINEERING AND LANDSCAPE DRAWINGS FOR CONCRETE SLAB AND DRAINAGE PLANS.
12. REFER TO CIVIL ENGINEERING AND LANDSCAPE DRAWINGS FOR EXACT COURTYARD WALL LOCATIONS.
13. SLOPE CONCRETE A MINIMUM OF 2% BELOW ALL THRESHOLDS WHERE LOCATED ON THE CONCRETE SLAB. THE SLOPE SHALL BE FOR THE ENTIRE WIDTH OF THE THRESHOLD.