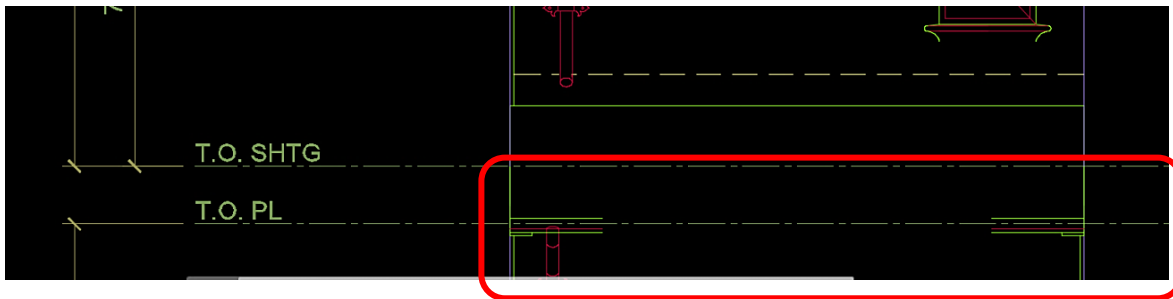
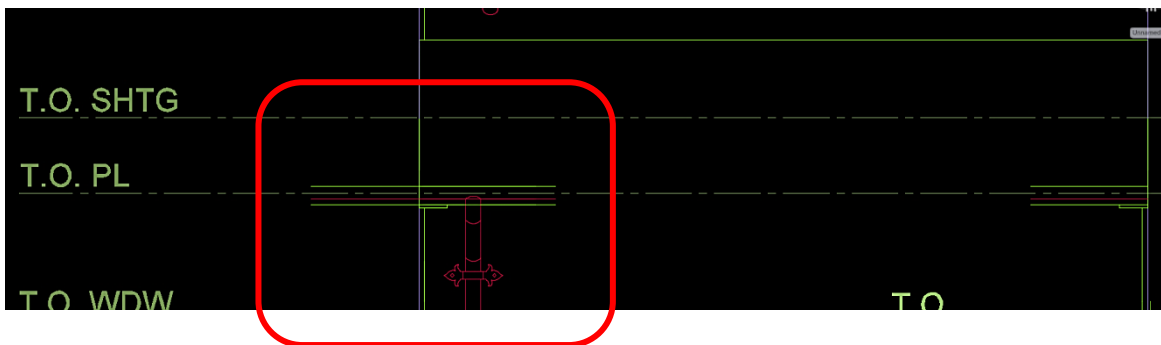


RAFTER ARRAY TUTORIAL:

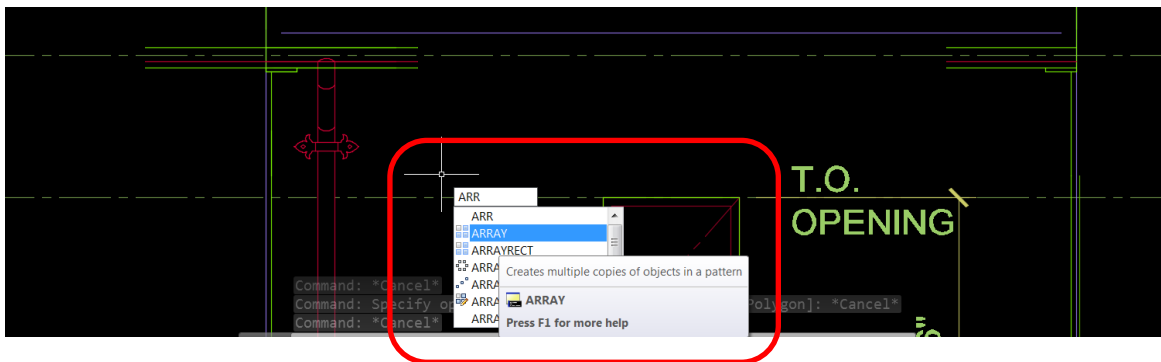
- 1) Insert the corner rafter tail block as you normally would and place it in its proper tail run locations. End to end (per RHA standard)



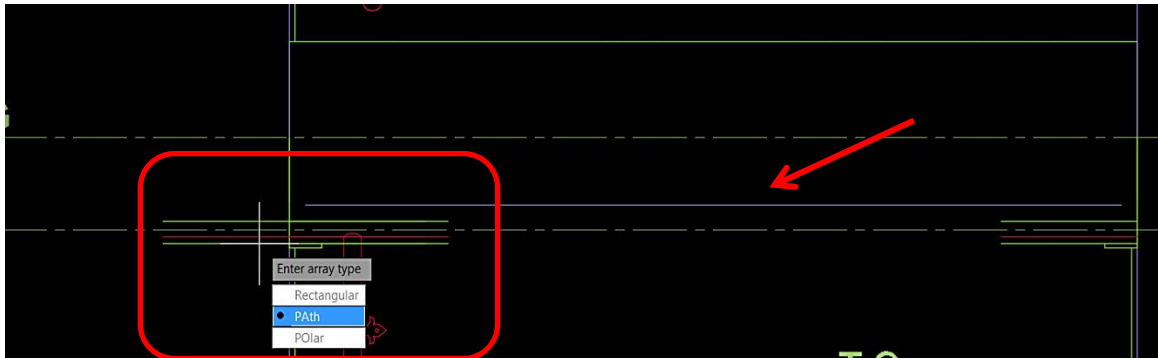
- 2) Draw a Line (path line), starting from the midpoint of one rafter to the other one.
- 3) Insert or Copy the rafter block to be directly located at the end rafter previously placed (image)



- 4) Run the ARRAY command, select Rafter block as an object. (image)

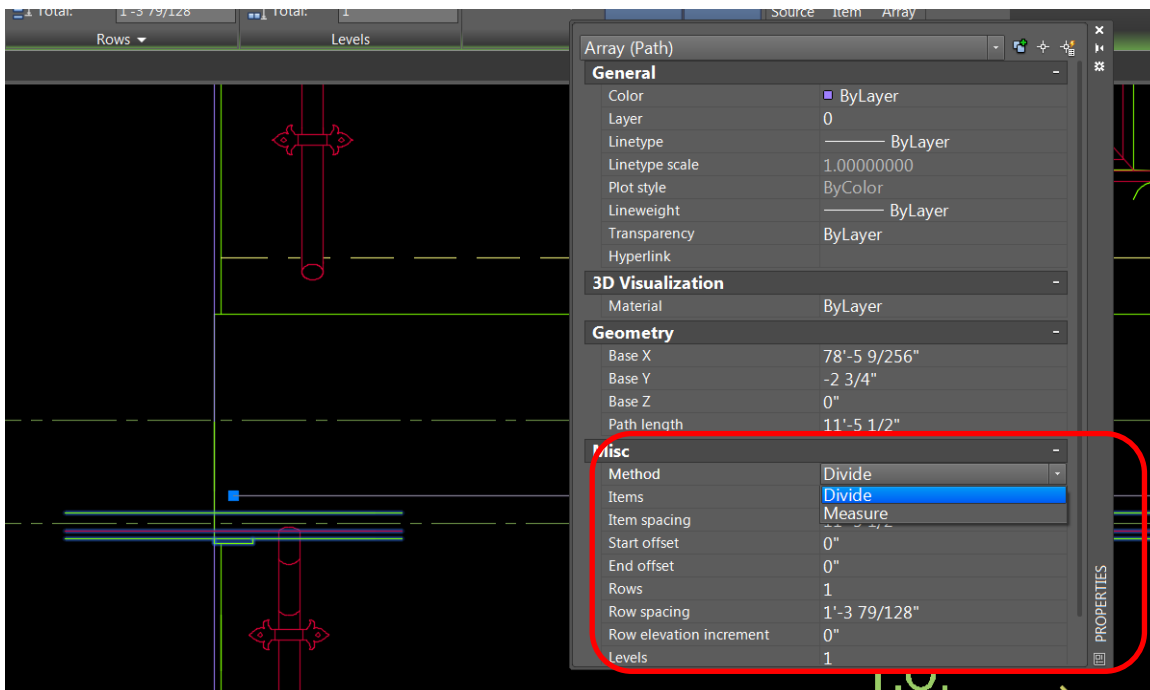


- 5) Next, select PATH, now it will ask you to select CURVE PATH, select the path line (step 2) as a path. And hit enter to finish the command.

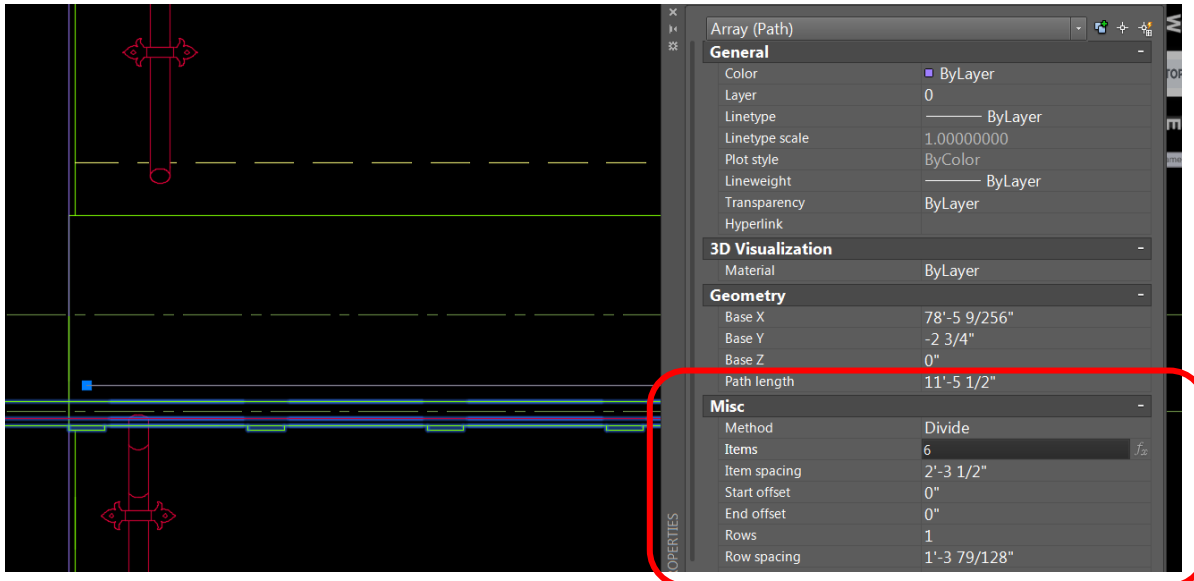


6) Click on the rafter block, In the properties window, under Misc section. Change method to Divide. (image)

\*You can open up properties window by typing PR or CH as a command or just press ctrl+1.



7) Next, set the Item counts in the Misc section, you can check the space from center to center of the items and find the right counts. Rafters spacing is (usually) between 2'-2" to 2'-6".



- 8) Next, your drawing is almost set, you only have to explode the array string and erase redundant rafters at each corners and also the path line. i.e. there is one rafter in each end. leave the original corner rafters to be there.
- 9) Done!